

Solano County

The Real Cost Measure in California 2023

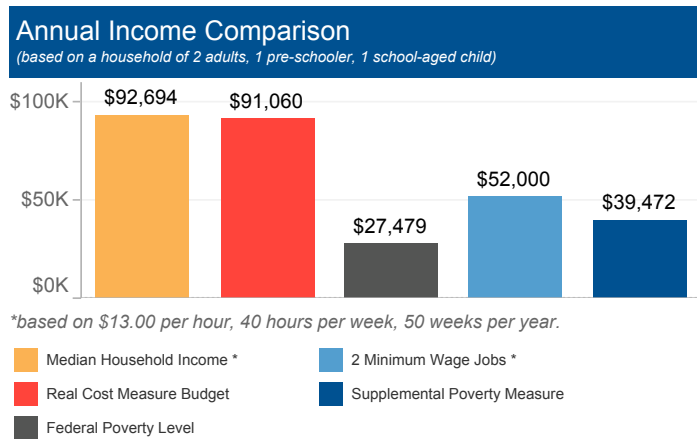


United Ways of California

The Real Cost Measure (RCM) estimates the amount of income required to meet basic needs including the costs of housing, child care, food, transportation, health care, and taxes. Unlike the official poverty measure which is primarily calculated based on the cost of food adjusted for inflation annually, the Real Cost Measure takes into account geographical differences in the cost of living throughout California.

If any results show blank values, that indicates the sample size is too small to illustrate Real Cost Measure results. Per our methodology, estimates with a cell size of greater than 5,000 are assumed to be accurate within +/-1% based on design factor analysis. Cell sizes less than 5,000 are suppressed.

# of Households below Real Cost Measure	% of Households below Real Cost Measure	% of Households below Real Cost Measure with at least 1 Working Adult
38,897	31%	96%



Household Budgets

	1 Adult	2 Adults	2 Adults, 1 Pre-schooler, 1 School-aged child
Housing	\$14,280	\$16,212	\$19,404
Food	\$4,440	\$8,148	\$12,600
Health Care	\$2,640	\$5,280	\$10,560
Child Care	\$0	\$0	\$17,088
Transportation	\$5,832	\$11,652	\$11,652
Miscellaneous	\$2,724	\$4,128	\$7,128
Taxes/Credits	\$5,397	\$6,886	\$12,628
FINAL BUDGET	\$35,313	\$52,306	\$91,060

Households of Color

Across the county, African Americans and Latinos have a disproportionate number of households with incomes below the Standard. In this area, of the 38,897 households below the Real Cost Measure, 13,658 are Latino.

Households with Young Children

- 52% of households with children under six struggle, a rate much greater than that of the rest of the county.
- Single mothers are most likely to struggle. 65% in the county are below the Real Cost Measure.

Working Households

- 96% of households below RCM have at least one working adult.
- 74% of heads of household who work are employed full time and year round.
- A family of four (2 adults, 1 infant, 1 school-aged child) would need to hold more than 3 full time, minimum-wage jobs to achieve economic security.**

Housing Burden

- 40% of all households in the county spend more than 30% of their income on housing.

Education

	# below RCM	% below RCM
Less than High School	6,518	70%
High School Diploma or Equivalent	11,561	45%
Some College, Assoc. or Voc.	13,127	27%
Bachelor's degree or higher	7,691	19%

Ethnicity

	# below RCM	% below RCM
Latino	13,658	48%
African American	6,515	40%
Asian American / Pacific Islander		
White	13,338	23%
Native American/Alaska Native		

Household Type

	# below RCM	% below RCM
Single Mothers	6,524	65%
Seniors	5,619	23%
Married Couples	16,526	31%
Informal Families	7,472	30%

Citizenship/Nativity

	# below RCM	% below RCM
Foreign Born, Non-Citizen	6,211	52%
Foreign Born, Naturalized	6,061	33%
Born a US Citizen	26,625	28%

** Minimum waged jobs based on \$13.00 per hour, 40 hours per week, 50 weeks per year. Median household earnings control for elder-led households and household led by persons with disabilities consistent with the Real Cost Measure.