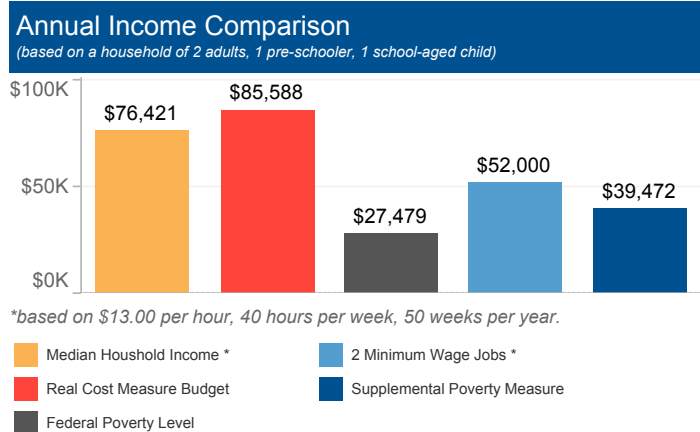


San Bernardino County The Real Cost Measure in California 2023

The Real Cost Measure (RCM) estimates the amount of income required to meet basic needs including the costs of housing, child care, food, transportation, health care, and taxes. Unlike the official poverty measure which is primarily calculated based on the cost of food adjusted for inflation annually, the Real Cost Measure takes into account geographical differences in the cost of living throughout California.

If any results show blank values, that indicates the sample size is too small to illustrate Real Cost Measure results. Per our methodology, estimates with a cell size of greater than 5,000 are assumed to be accurate within +/-1% based on design factor analysis. Cell sizes less than 5,000 are suppressed.

# of Households below Real Cost Measure	% of Households below Real Cost Measure	% of Households below Real Cost Measure with at least 1 Working Adult
212,978	39%	97%



Household Budgets

	1 Adult	2 Adults	2 Adults, 1 Pre-schooler, 1 School-aged child
Housing	\$11,460	\$13,272	\$16,680
Food	\$4,488	\$8,232	\$12,720
Health Care	\$2,640	\$5,268	\$10,548
Child Care	\$0	\$0	\$15,768
Transportation	\$5,892	\$11,784	\$11,784
Miscellaneous	\$2,448	\$3,852	\$6,756
Taxes/Credits	\$4,566	\$6,080	\$11,332
FINAL BUDGET	\$31,494	\$48,488	\$85,588

Households of Color

Across the county, African Americans and Latinos have a disproportionate number of households with incomes below the Standard. In this area, of the 212,978 households below the Real Cost Measure, 123,928 are Latino.

Households with Young Children

- 61% of households with children under six struggle, a rate much greater than that of the rest of the county.
- Single mothers are most likely to struggle. 73% in the county are below the Real Cost Measure.

Working Households

- 97% of households below RCM have at least one working adult.
- 76% of heads of household who work are employed full time and year round.
- A family of four (2 adults, 1 infant, 1 school-aged child) would need to hold more than 3 full time, minimum-wage jobs to achieve economic security.**

Housing Burden

- 38% of all households in the county spend more than 30% of their income on housing.

Education

	# below RCM	% below RCM
Less than High School	49,861	64%
High School Diploma or Equivalent	67,364	49%
Some College, Assoc. or Voc.	65,395	36%
Bachelor's degree or higher	30,358	20%

Ethnicity

	# below RCM	% below RCM
Latino	123,928	47%
African American	22,205	48%
Asian American / Pacific Islander	14,671	28%
White	51,019	28%
Native American/Alaska Native		

Household Type

	# below RCM	% below RCM
Single Mothers	43,156	73%
Seniors	19,719	26%
Married Couples	91,139	36%
Informal Families	30,252	32%

Citizenship/Nativity

	# below RCM	% below RCM
Foreign Born, Non-Citizen	42,844	59%
Born a US Citizen	137,407	36%
Foreign Born, Naturalized	32,727	34%

** Minimum waged jobs based on \$13.00 per hour, 40 hours per week, 50 weeks per year. Median household earnings control for elder-led households and household led by persons with disabilities consistent with the Real Cost Measure.