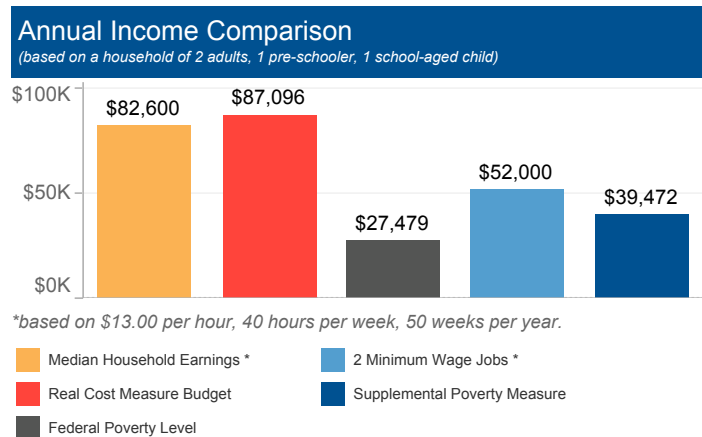


Sacramento County The Real Cost Measure in California 2023

The Real Cost Measure (RCM) estimates the amount of income required to meet basic needs including the costs of housing, child care, food, transportation, health care, and taxes. Unlike the official poverty measure which is primarily calculated based on the cost of food adjusted for inflation annually, the Real Cost Measure takes into account geographical differences in the cost of living throughout California.

If any results show blank values, that indicates the sample size is too small to illustrate Real Cost Measure results. Per our methodology, estimates with a cell size of greater than 5,000 are assumed to be accurate within +/-1% based on design factor analysis. Cell sizes less than 5,000 are suppressed.

# of Households below Real Cost Measure	% of Households below Real Cost Measure	% of Households below Real Cost Measure with at least 1 Working Adult
141,350	30%	97%



Household Budgets

	1 Adult	2 Adults	2 Adults, 1 Pre-schooler, 1 School-aged child
Housing	\$12,720	\$14,256	\$17,940
Food	\$4,392	\$8,052	\$12,444
Health Care	\$2,592	\$5,172	\$10,344
Child Care	\$0	\$0	\$16,596
Transportation	\$5,628	\$11,256	\$11,256
Miscellaneous	\$2,532	\$3,876	\$6,852
Taxes/Credits	\$4,825	\$6,126	\$11,664
FINAL BUDGET	\$32,689	\$48,738	\$87,096

Households of Color

Across the county, African Americans and Latinos have a disproportionate number of households with incomes below the Standard. In this area, of the 141,350 households below the Real Cost Measure, 37,103 are Latino.

Households with Young Children

- 53% of households with children under six struggle, a rate much greater than that of the rest of the county.
- Single mothers are most likely to struggle. 61% in the county are below the Real Cost Measure.

Working Households

- 97% of households below RCM have at least one working adult.
- 72% of heads of household who work are employed full time and year round.
- A family of four (2 adults, 1 infant, 1 school-aged child) would need to hold more than 2 full time, minimum-wage jobs to achieve economic security.**

Housing Burden

- 37% of all households in the county spend more than 30% of their income on housing.

Education

	# below RCM	% below RCM
Less than High School	22,427	63%
High School Diploma or Equivalent	35,757	45%
Some College, Assoc. or Voc.	55,221	34%
Bachelor's degree or higher	27,945	15%

Ethnicity

	# below RCM	% below RCM
Latino	37,103	41%
African American	16,526	38%
Asian American / Pacific Islander	26,352	33%
White	59,904	24%
Native American/Alaska Native		

Household Type

	# below RCM	% below RCM
Single Mothers	19,917	61%
Seniors	23,151	28%
Married Couples	52,472	28%
Informal Families	30,317	26%

Citizenship/Nativity

	# below RCM	% below RCM
Foreign Born, Non-Citizen	17,778	54%
Foreign Born, Naturalized	29,964	37%
Born a US Citizen	93,608	26%

** Minimum waged jobs based on \$13.00 per hour, 40 hours per week, 50 weeks per year. Median household earnings control for elder-led households and household led by persons with disabilities consistent with the Real Cost Measure.