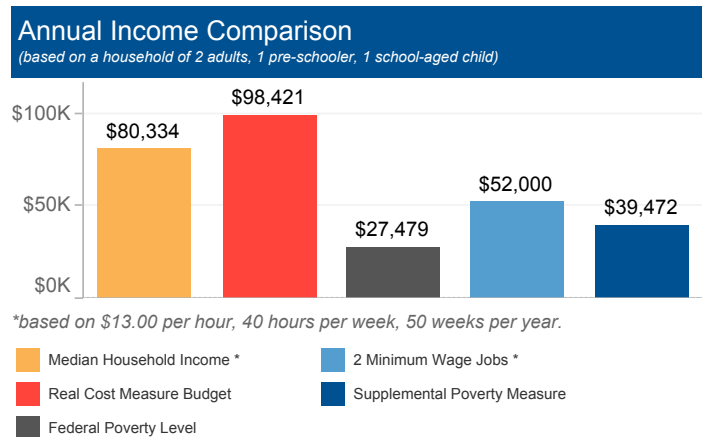


Los Angeles County The Real Cost Measure in California 2023

The Real Cost Measure (RCM) estimates the amount of income required to meet basic needs including the costs of housing, child care, food, transportation, health care, and taxes. Unlike the official poverty measure which is primarily calculated based on the cost of food adjusted for inflation annually, the Real Cost Measure takes into account geographical differences in the cost of living throughout California.

If any results show blank values, that indicates the sample size is too small to illustrate Real Cost Measure results. Per our methodology, estimates with a cell size of greater than 5,000 are assumed to be accurate within +/-1% based on design factor analysis. Cell sizes less than 5,000 are suppressed.

# of Households below Real Cost Measure	% of Households below Real Cost Measure	% of Households below Real Cost Measure with at least 1 Working Adult
1,112,118	40%	97%



Household Budgets

	1 Adult	2 Adults	2 Adults, 1 Pre-schooler, 1 School-aged child
Housing	\$16,428	\$19,260	\$24,696
Food	\$4,272	\$7,824	\$12,096
Health Care	\$2,520	\$5,040	\$10,080
Child Care	\$0	\$0	\$18,708
Transportation	\$5,436	\$10,884	\$10,884
Miscellaneous	\$2,868	\$4,296	\$7,644
Taxes/Credits	\$5,846	\$7,365	\$14,313
FINAL BUDGET	\$37,370	\$54,669	\$98,421

Households of Color

Across the county, African Americans and Latinos have a disproportionate number of households with incomes below the Standard. In this area, of the 1,112,118 households below the Real Cost Measure, 590,819 are Latino.

Households with Young Children

- 57% of households with children under six struggle, a rate much greater than that of the rest of the county.
- Single mothers are most likely to struggle. 73% in the county are below the Real Cost Measure.

Working Households

- 97% of households below RCM have at least one working adult.
- 69% of heads of household who work are employed full time and year round.
- A family of four (2 adults, 1 infant, 1 school-aged child) would need to hold more than 3 full time, minimum-wage jobs to achieve economic security.**

Housing Burden

- 46% of all households in the county spend more than 30% of their income on housing.

Education

	# below RCM	% below RCM
Less than High School	279,395	71%
High School Diploma or Equivalent	258,342	57%
Some College, Assoc. or Voc.	314,937	44%
Bachelor's degree or higher	259,444	21%

Ethnicity

	# below RCM	% below RCM
Latino	590,819	54%
African American	111,955	48%
Asian American / Pacific Islander	151,831	34%
White	251,008	25%
Native American/Alaska Native		

Household Type

	# below RCM	% below RCM
Single Mothers	157,519	73%
Seniors	156,011	35%
Married Couples	374,616	35%
Informal Families	257,806	35%

Citizenship/Nativity

	# below RCM	% below RCM
Foreign Born, Non-Citizen	302,356	65%
Foreign Born, Naturalized	280,988	41%
Born a US Citizen	528,774	32%

** Minimum waged jobs based on \$13.00 per hour, 40 hours per week, 50 weeks per year. Median household earnings control for elder-led households and household led by persons with disabilities consistent with the Real Cost Measure.