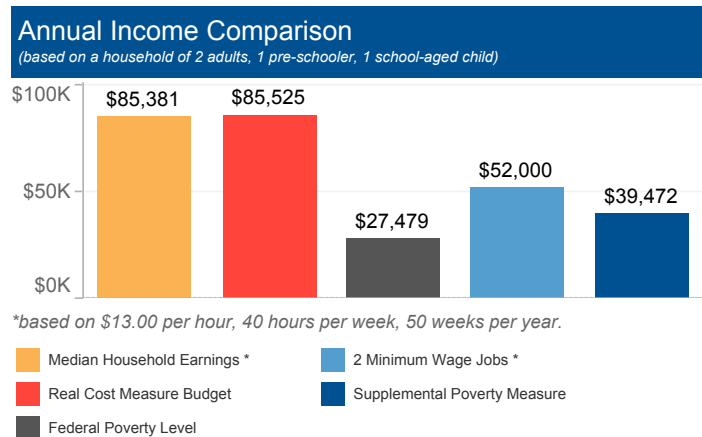


Greater Sacramento The Real Cost Measure in California 2023

The Real Cost Measure (RCM) estimates the amount of income required to meet basic needs including the costs of housing, child care, food, transportation, health care, and taxes. Unlike the official poverty measure which is primarily calculated based on the cost of food adjusted for inflation annually, the Real Cost Measure takes into account geographical differences in the cost of living throughout California.

If any results show blank values, that indicates the sample size is too small to illustrate Real Cost Measure results. Per our methodology, estimates with a cell size of greater than 5,000 are assumed to be accurate within +/-1% based on design factor analysis. Cell sizes less than 5,000 are suppressed.

# of Households below Real Cost Measure	% of Households below Real Cost Measure	% of Households below Real Cost Measure with at least 1 Working Adult
223,754	29%	97%



Household Budgets

	1 Adult	2 Adults	2 Adults, 1 Pre-schooler, 1 School-aged child
Housing	\$12,336	\$13,421	\$17,083
Food	\$4,259	\$7,812	\$12,072
Health Care	\$2,508	\$5,018	\$10,032
Child Care	\$0	\$0	\$17,398
Transportation	\$5,450	\$10,909	\$10,909
Miscellaneous	\$2,456	\$3,714	\$6,750
Taxes/Credits	\$4,590	\$5,733	\$11,281
FINAL BUDGET	\$31,600	\$46,607	\$85,525

Households of Color

Across the region, African Americans and Latinos have a disproportionate number of households with incomes below the Standard. In this area, of the 223,754 households below the Real Cost Measure, 61,661 are Latino.

Households with Young Children

- 50% of households with children under six struggle, a rate much greater than that of the rest of the region.
- Single mothers are most likely to struggle. 60% in the region are below the Real Cost Measure.

Working Households

- 97% of households below RCM have at least one working adult.
- 71% of heads of household who work are employed full time and year round.
- A family of four (2 adults, 1 infant, 1 school-aged child) would need to hold more than 2 full time, minimum-wage jobs to achieve economic security.**

Housing Burden

- 35% of all households in the region spend more than 30% of their income on housing.

Education

	# below RCM	% below RCM
Less than High School	33,298	61%
High School Diploma or Equivalent	55,245	43%
Some College, Assoc. or Voc.	89,803	33%
Bachelor's degree or higher	45,408	14%

Ethnicity

	# below RCM	% below RCM
Latino	61,661	42%
African American	18,379	38%
Asian American / Pacific Islander	36,610	34%
White	104,742	23%
Native American/Alaska Native		

Household Type

	# below RCM	% below RCM
Single Mothers	32,268	60%
Seniors	37,547	25%
Married Couples	80,609	25%
Informal Families	49,136	28%

Citizenship/Nativity

	# below RCM	% below RCM
Foreign Born, Non-Citizen	29,284	56%
Foreign Born, Naturalized	40,600	36%
Born a US Citizen	153,870	25%

** Minimum waged jobs based on \$13.00 per hour, 40 hours per week, 50 weeks per year. Median household earnings control for elder-led households and household led by persons with disabilities consistent with the Real Cost Measure.

Greater Sacramento: El Dorado, Placer, Sacramento, Yolo, Sutter and Yuba counties.

Findings drawn from *The Real Cost Measure in California 2023* by United Ways of California. Data calculated for this geographic profile is from 2021. For detailed methodology, please visit <https://www.unitedwaysca.org/realcost>.